



DIGITALISERINGSSTYRELSEN

A strong common foundation and opening data as needed

April 2021



Agenda

1. Open and data in Denmark

2. ODIS

3. The Basic Data Programme



Data as the foundation

- Good base registers for a long time
 - CPR
 - Addresses
 - GeoDanmark



Open as a matter of fact

- Long tradition for transparency
- Strong legislation about public administration
- Great level of mutual trust with citizens
- Open is a given



Open Data in Service

ODIS
– offentlige data i spil



- Concieved in 2006 at Innovation Bootcamp
 - Implemented 2008
- Informal, agile approach
- Come as you are
 - DO: publish data as is
 - DONT: spend a lot on cleaning data before you know the demand





What did we do?

- Data catalogue
- Hackathons
- Competition
- Funding for opening of data
- Community collaboration
- Data Hunters®





What did we learn?

- Guerilla tactics work 😊
- The users are out there
 - But don't assume that you know what they want
- Catalogues need maintenance
 - And that only works if authorities buy in on them
- Just do it!





THE eGOVERNMENT
STRATEGY 2011-2015

THE DANISH GOVERNMENT /
LOCAL GOVERNMENT DENMARK
OCTOBER 2012

GOOD BASIC DATA FOR EVERYONE – A DRIVER FOR GROWTH AND EFFICIENCY



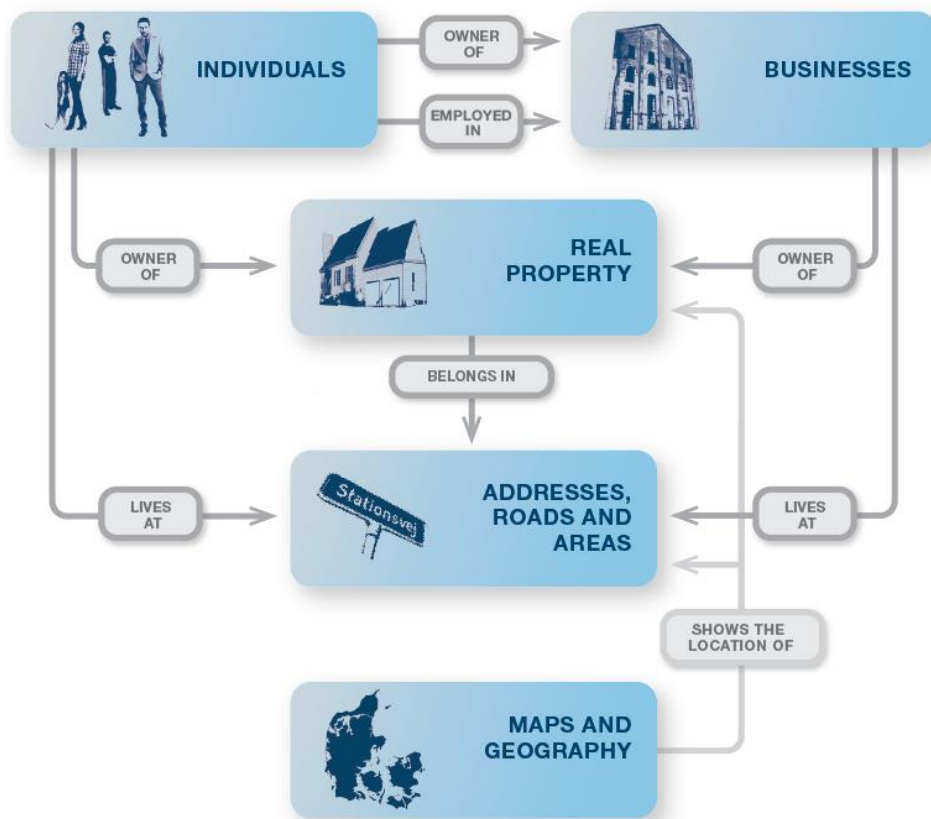
DIGITALISERINGSSTYRELSEN

The Danish government and Local Government Denmark entered into an agreement on basic data in October 2012

- Investments of approx. €130 million over 8 years
- Open access to public-sector basic data for everyone, including enterprises and individuals
- A common single distribution solution: the Data Distributor
- Initiatives for real property, address, geographic, personal and business data
- The establishment of a cross-institutional basic-data committee
- Analyses of new areas of basic-data relevance



Basic data in brief



What was done

- Data quality improvements
- Data structure improvements - crosslinking
- Making data free (as in beer)
- New register systems
- The Data Distributor

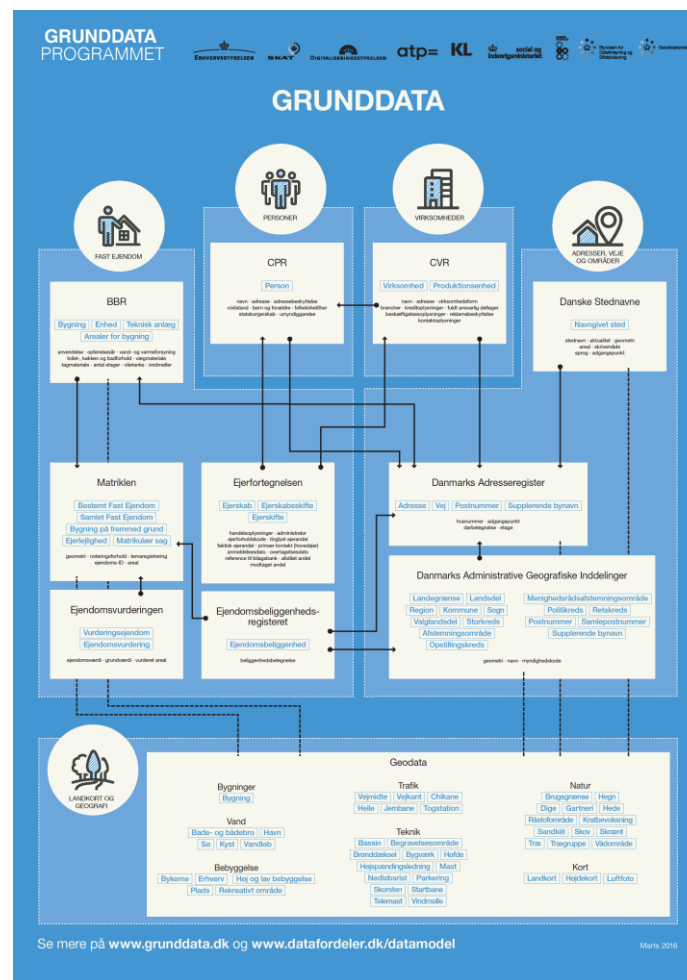


MEN AT WORK

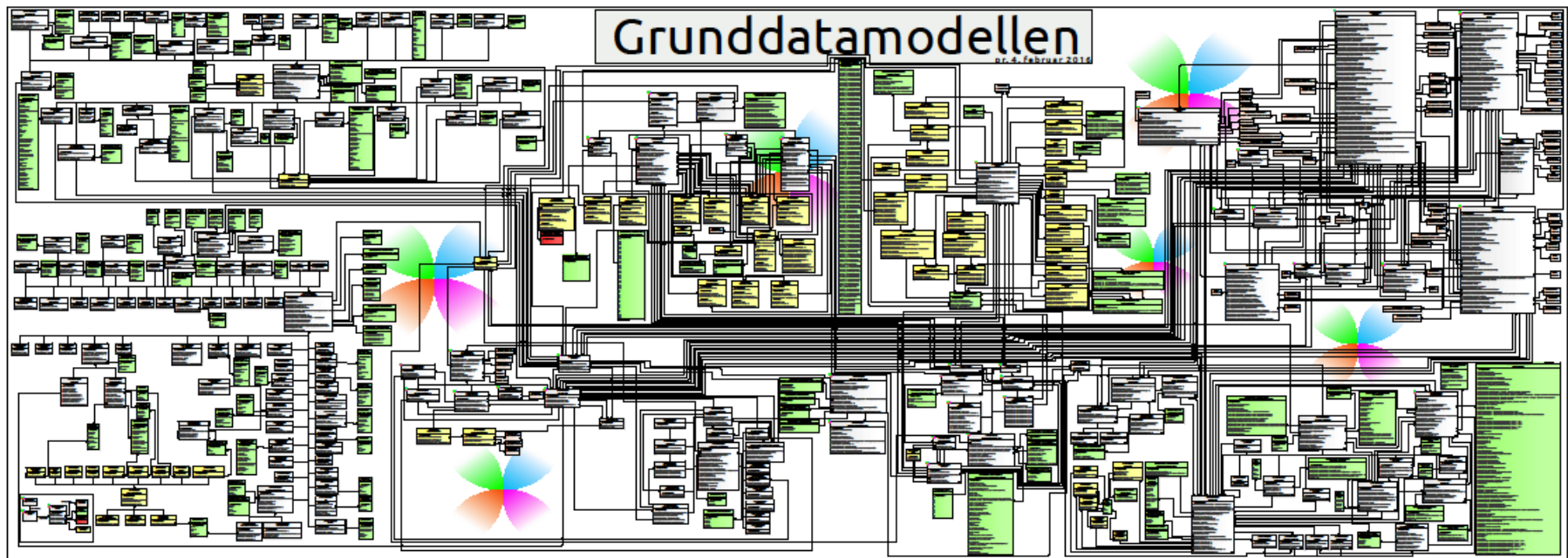


Common data model – The Basic Data model

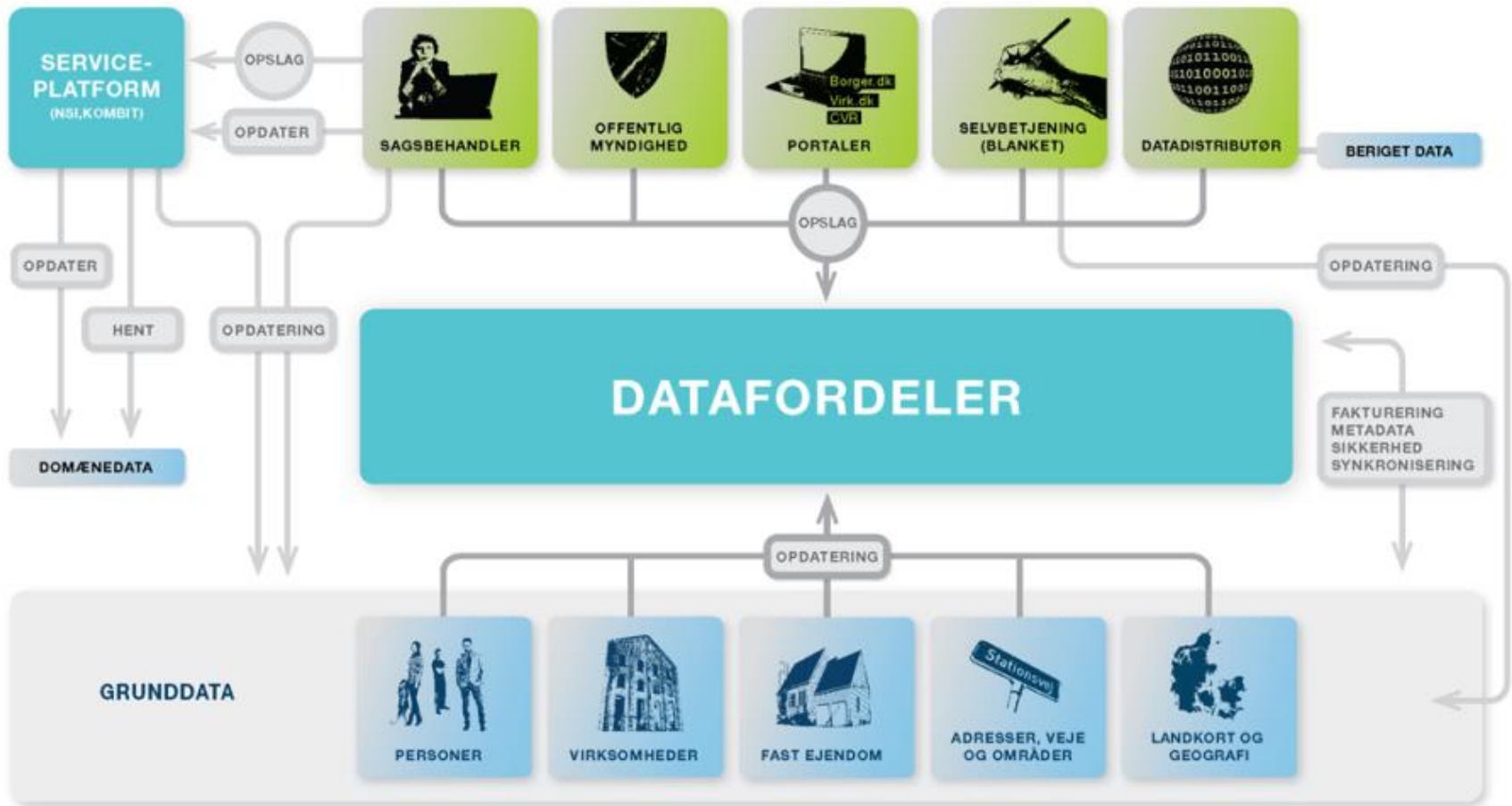
- Each register develops and maintains its own part
- 13 rules – that's it
- Hard governance
- Format requirements (XMI, EA)



The real data model



DATADISTRIBUTIONEN



Identifying and managing the benefits

- Mapping of all project milestones across the programme
- Interdependencies identified
- Critical paths defined



For more information

Please contact mr. Adam Arndt:

arndt@digst.dk

Tel. +45 2092 0894

Read more about

- ODIS at: <https://www.digitaliser.dk/group/237756> (Danish only)
- Basic data at: <https://www.datafordeler.dk> (Danish only)
- Danish Agency for Digitisation: <https://en.digst.dk/>

